

SPECIFICATIONS

*With rubber shoe type

Model		KX037-4	
Machine weight ¹	Cabin / Canopy	kg	3650 / 3480
Operating weight ²	Cabin / Canopy	kg	3720 / 3560
Model		D1703-M-DI-E4	
Type		4-cycle liquid cooled diesel	
Engine	Output ISO9249 NET	PS/rpm	24.2 / 2200
		kW/rpm	17.8 / 2200
Number of cylinders		3	
Bore × Stroke		mm	87 × 92.4
Displacement		cc	1647
Overall width		mm	1550
Overall height (Cabin / Canopy)		mm	2470 / 2480
Overall length		mm	4900
Ground clearance		mm	285
Dozer size (width × height)		mm	1550 × 340
Rubber shoe width		mm	300
Minimum front swivel radius	No boom swing	mm	2100
	Boom swing (left)	mm	1730
Boom swing angle (left / right)		deg	69 / 49
Hydraulic System	P1, P2		Variable displacement pump
	Flow rate ℓ / min		81.4
	Hydraulic pressure MPa (kgf/cm ²)		24.5 (250)
	P3		Gear pump
	Flow rate ℓ / min		20.9
	Hydraulic pressure MPa (kgf/cm ²)		19.6 (200)
	Auxiliary (AUX1)	Max. flow rate ℓ / min	61.6
		Max. hydraulic pressure MPa (kgf/cm ²)	20.6 (210)
	Auxiliary (AUX2)	Max. flow rate ℓ / min	20.9
		Max. hydraulic pressure MPa (kgf/cm ²)	19.6 (200)
Max. digging force	Arm kN (kgf)	17.1 (1745)	
	Bucket kN (kgf)	30.0 (3060)	
Hydraulic reservoir (tank / full)		ℓ	44.6 / 61
Max. travelling speed (low / high)		km/h	3.0 / 4.6
Ground contact pressure (cabin / canopy)		kPa (kgf/cm ²)	34.3 (0.35) / 32.8 (0.33)
Swivelling speed		rpm	8.3
Fuel tank capacity		ℓ	45.1
Noise level	LpA	dB (A)	78
	LwA (2000/14/EC)	dB (A)	94

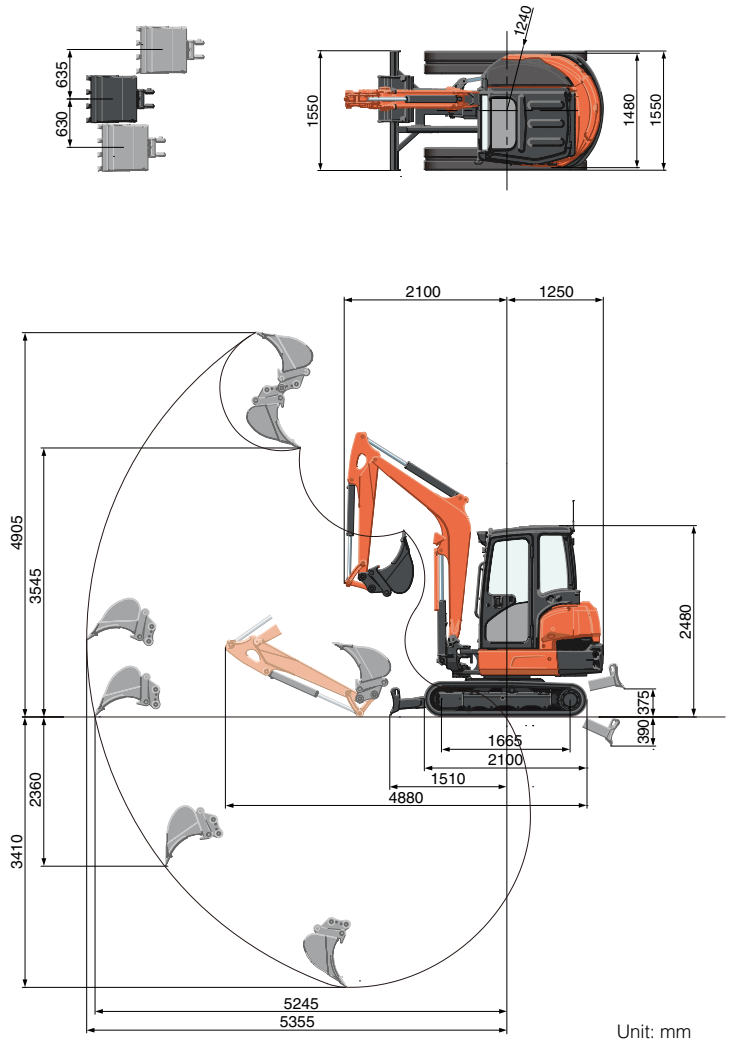
Vibration ³	Hand arm system (ISO 5349-2:2001)	Digging	m/s ² RMS	<2.5
		Levelling	m/s ² RMS	<2.5
		Driving	m/s ² RMS	<2.5
		Idling	m/s ² RMS	<2.5
	Whole body (ISO 2631-1:1997)	Digging	m/s ² RMS	<0.5
		Levelling	m/s ² RMS	<0.5
		Driving	m/s ² RMS	<0.5
		Idling	m/s ² RMS	<0.5

¹ With 72 kg Kubota original Pin-on bucket, full tanks.

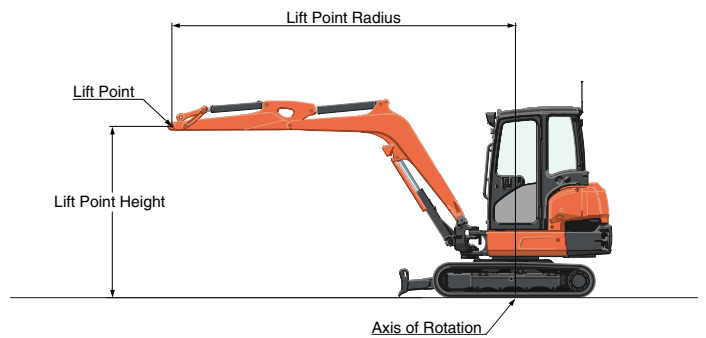
² Machine weight + 75 kg operator

³ These values are measured under specific conditions at maximum engine speed and can deviate, depending on the operating status.

WORKING RANGE



Unit: mm



* Working ranges are with Kubota original bucket, without quick coupler.

* Specifications are subject to change without notice for purpose of improvement.

LIFTING CAPACITY

Rubber shoe, cabin type:

kN (kg)

Lift Point Height	Lifting point radius (3m)			Lifting point radius (4.5m)		
	Over-front		Over-side	Over-front		Over-side
	Blade Down	Blade Up		Blade Down	Blade Up	
2.0m	6.5 (663)	6.5 (663)	6.5 (663)	7.1 (730)	6.2 (634)	5.3 (536)
1.5m	7.8 (796)	7.8 (796)	7.8 (796)	6.1 (626)	5.1 (525)	4.3 (444)
1.0m	9.1 (932)	9.1 (932)	7.6 (775)	6.4 (652)	5.1 (520)	4.3 (439)
0m	11 (1125)	8.8 (901)	7.3 (742)	8.1 (825)	6 (613)	5.1 (516)

Fluorinated greenhouse gases				
Air conditioner gas contains fluorinated greenhouse gases.				
Model	Industrial designation	Quantity (kg)	CO ₂ equivalent (ton)	GWP
KX037-4	HFC-134a	0.8	1.15	1430
(Global Warming Potential: GWP)				

★ All images shown are for brochure purposes only.

When operating the excavator, wear clothing and equipment in accordance to local legal and safety regulations.

KUBOTA EUROPE S.A.S.

19 rue Jules Verceyruisse
Zone Industrielle - CS 50088
95101 Argenteuil Cedex France
Téléphone : (33) 01 34 26 34 34
Télécopieur : (33) 01 34 26 34 99

KUBOTA (U.K.) LTD

Dormer Road, Thame, Oxfordshire,
OX9 3UN, U.K.
Phone : 01844-268140
F a x : 01844-216685

KUBOTA Baumaschinen GmbH

Steinhauser Straße 100
D-66482 Zweibrücken Germany
Telefon : (49) 0 63 32 - 487 - 312
F a x : (49) 0 63 32 - 487 - 101

